

Disneyland

Grad nite '72



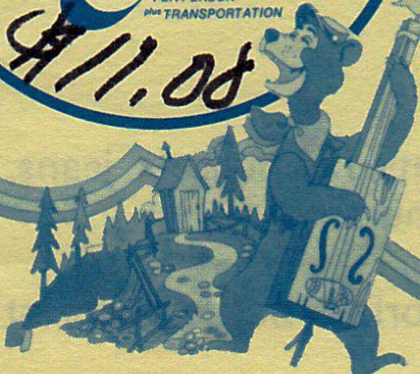
FREE SOUVENIR PROGRAM AND PHOTO

ENJOY UNLIMITED
USE OF ALL DISNEYLAND
ATTRACTIONS ALL NITE LONG! ...
including Disneyland's newest attraction
COUNTRY BEAR JAMBOREE

11p.m. to 5a.m.

TICKETS
~~\$9.00~~
PER PERSON
plus TRANSPORTATION

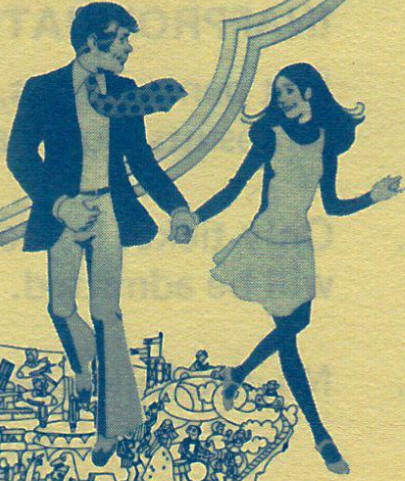
\$11.00



LISTEN AND DANCE 'TIL DAWN TO THESE GREAT STARS:

STEVIE WONDER
The GRASS ROOTS
HELEN REDDY
ROBERT JOHN

Plus... All that Roaring 20's Jazz
The Sound Castle, Ltd.
Teddy Buckner
and his orchestra
The Great Crowd



AVAILABLE
EXCLUSIVELY
TO SENIORS
AND THEIR DATES



CONGRATULATIONS GRADUATE

We look forward to helping you celebrate this once-in-a-lifetime event. Disneyland is ready to give you a fun-filled evening that will become a "forever" memory of good times. Grad Nite is a unique Disneyland experience. It's a time when the Park belongs to you, and you alone. There is a special air, a different feeling, a more exciting atmosphere when everyone dresses in "Party Best" for their last fling together.

We will do our part to assure your enjoyment and discourage inconsiderate behaviour by turning away those who show little respect for others by being poorly groomed in appearance or attitude.

To help maintain this special festive atmosphere, we have evolved a few simple guidelines.

1. GENTLEMEN – APPROPRIATE ATTIRE:

Dress shirt and tie; suit coat or sport coat; dress trousers and dress shoes.

INAPPROPRIATE ATTIRE:

Sandals and canvas shoes; jackets and sweaters (including turtleneck and letter sweaters).

LADIES – APPROPRIATE ATTIRE:

Date dress; mini, midi and maxi; coordinated pant-suits and slack suits (not separates).

INAPPROPRIATE ATTIRE:

Hot pants, slacks, capris and capri sets, hip huggers, jeans, jumpsuits, culottes, pedal pushers, mumus.

2. Only ticket holders arriving by authorized bus transportation will be admitted.

3. No alcoholic beverages are allowed in Disneyland at any time.